
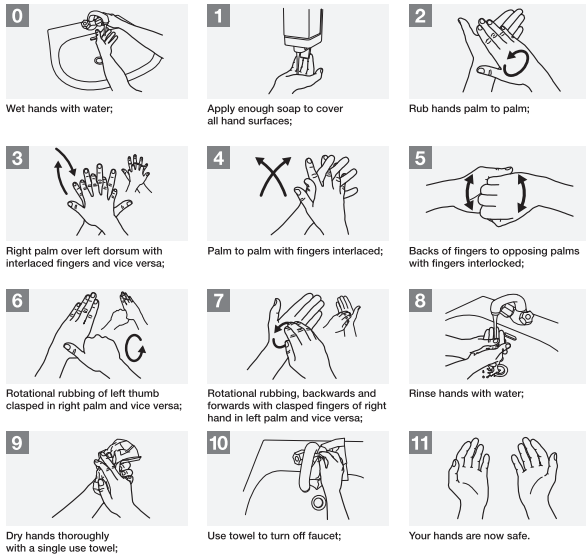


Remember your hand washing Techniques

# How to Handwash?

WASH HANDS WHEN VISIBLY SOILED! OTHERWISE, USE HANDRUB

 **Duration of the entire procedure: 40-60 seconds**



May 2015



## DROPLET PRECAUTIONS

## Patient Education

Infection Control Department

December 2017



*'Getting Better Together'*

The Queen Elizabeth Hospital  
Martindale's Road  
ST. MICHAEL  
Phone: 436-6450  
Fax: 429-5374  
[www.qehconnect.com](http://www.qehconnect.com)

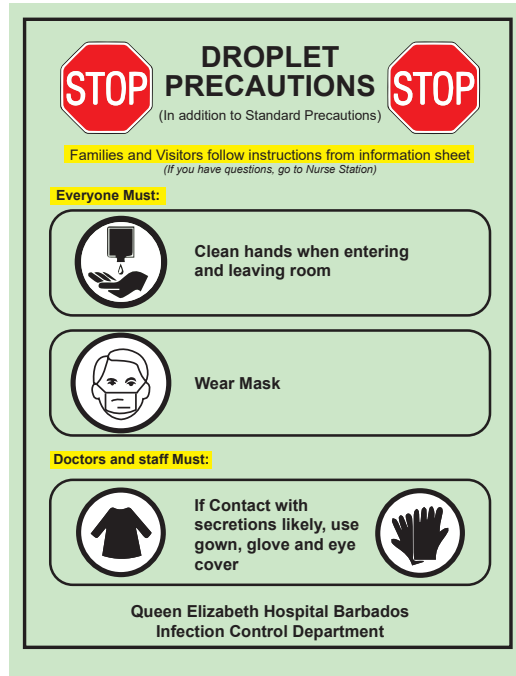
## What is Droplet Precaution?

This is designed to reduce the risk of droplet transmission of infectious agents. Infectious droplets are released when the infected person sneezes or coughs and the large droplet spray may spread as far as three feet.

## What kind of infections can be spread by droplet precaution?

- Pertussis,
- Influenza,
- Diphtheria
- Meningococcal meningitis
- Mumps
- Rubella
- Pneumonic plague
- Infections caused by multi-drug resistant *Streptococcus pneumoniae*.

## What does the sign look like?



## If I am the patient, what should I do?

- You may be asked to wear a mask to protect others
- Cover your nose and mouth with a tissue every time you cough or sneeze.
- After coughing or sneezing, always clean your hands with soap & water or an alcohol-based hand cleaner.
- Clean your hands often with soap and water or an alcohol-based hand cleaner.

## What should the care providers be doing?

- Patients should be nursed in a private room.
- Patients should stay in their room except for medically necessary procedures; a mask should be worn when out of the room.
- A regular surgical mask should be used for any potential exposure within three feet of the patient.
- Gloves and gowns are required when delivering patient/care.
- Patient care items such as blood pressure cuff, etc. should be dedicated to that patient.
- Patients should be taught to cover their nose and mouth with tissues when coughing or sneezing and to discard tissues into a bag.

## If I am a family member or other visitor, what should I do?

Persons visiting patients on droplet precautions should follow facility employee instructions. You will usually be asked to wear a surgical mask when you are in the patient's room and you must wash your hands before and after the visit.