

# How to Handwash?

 **Duration of the entire procedure: 40-60 seconds**



# CONTACT ENTERIC PRECAUTIONS

# Patient Education

December 2017



## 'Getting Better Together'

The Queen Elizabeth Hospital  
Martindale's Road  
ST. MICHAEL  
Phone: 436-6450  
Fax: 429-5374  
[www.qehconnect.com](http://www.qehconnect.com)

## What is Contact Enteric Precaution?

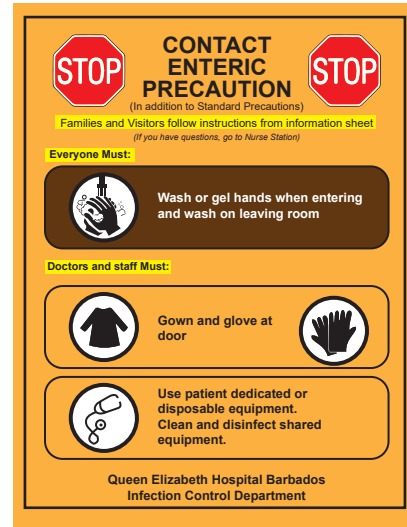
Enteric refers to the intestinal tract and the possibility of a disease or bacteria causing intestinal upset. As a general rule, people who are admitted to a hospital with diarrhoea are placed in enteric precautions, sometimes called enteric isolation, until the diarrhoea has stopped.

Procedures that reduce the risk of spread of transmission occurs with physical contact of the infected patient or handling of a contaminated object in the infected patient's room.

## What kind of infections can be spread by contact enteric ?

- Clostridium difficile infection
- Norovirus
- Rotavirus
- New onset of diarrhoea (  $\geq 3$  episodes within a 24-hour period)

## What does the sign look like?



## What should the care providers be doing?

- Your care providers should wear a gown and gloves whenever they are in the room. They should don the gown and gloves as they enter the room, and remove the gown and gloves as they exit the room.
- Care Providers should also wash their hands before donning the gown and gloves when entering the room, and as they leave the room.
- Hospital personnel who clean the room and provide other services should also wear a gown and gloves.

## If I am the patient, what should I do?

- You should follow instructions from your care provider.
- You may be asked to stay in your room. If you are told that you can leave your room for activities, you may be asked not to visit other patients in their rooms.
- You will be reminded to wash your hands frequently especially after using the bathroom and before eating.

## If I am the patient, what should I do?

- People who visit patients on contact enteric precautions should follow facility employee instructions.
- You will usually be asked to wear a gown and gloves while providing care when you are in the patient's room. You must wash your hands before and after the visit. Visitors should never use bacterial liquid or gel to cleanse their hands as this can make the skin sticky and add to the collection of bacteria to hands.
- Visitors should avoid coming into contact with the patient's body fluids.